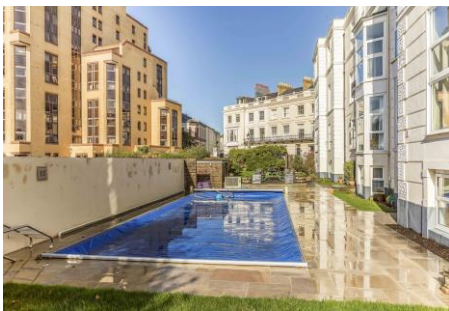


# PARK HOUSE

CLARENCE PARADE | SOUTHSEA | PO5 3RJ



## MONTHLY RENTAL OF £1,150

Fry and Kent are pleased to offer for rent this well presented, two bedroom first floor apartment located within this landmark building occupying a prominent seafront location on Clarence Parade, with a host of leisure facilities and amenities close to hand. The property is approached via a communal entrance on Auckland Road West with stairs rising to the first floor. Internally the property has been refurbished throughout to a high specification and comprises an entrance hall, two double bedrooms, modern shower room with utility cupboard, kitchen leading to the bright spacious living room. Externally there are communal gardens, bike storage and the use of the residents' swimming pool. Offered unfurnished and available now. Viewings are a must!

- Two Bedroom Seafront Apartment
- Refurbished Throughout High Spec
- Spacious Living Room & Separate Utility
- Gas Heating System & Double Glazing
- Communal Swimming Pool & Gardens
- Offered Unfurnished and Available Now!



## What you need to do

1. Pay Holding Deposit – equivalent to one weeks rent.  
This will be refunded if your application is unsuccessful unless you have provided false or misleading information in which case it will be retained.
2. Provide I.D. proof of address [see list of acceptable items]
3. Complete `Vouch` application form and follow the instructions/prompts which the system will send you.

## What happens next?

1. Vouch will request references and conduct a credit check based on the information you provide
2. Vouch will keep you informed throughout the process.

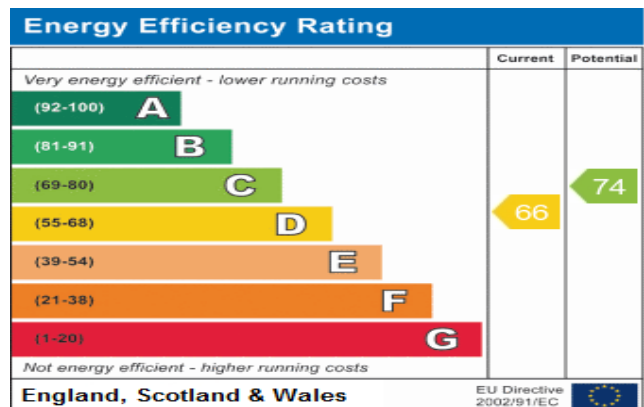
*[Please be aware that it is your responsibility to ensure that any referees e.g. previous Landlords/Agents/Employers are aware of the requirement to provide information on your behalf and a speedy decision will be entirely dependent on the information being provided promptly so you are advised to chase/encourage your referees as appropriate . You may contact Vouch if you have any issues during this process.]*

3. The Property can only be held for a maximum of 14 days whilst your application is processed  
At the end of this period if the information required has not been received, we are obliged to return your holding deposit and reject your application [unless an extension is agreed otherwise]
4. Once the process is completed you will be advised of the decision.

## When can I move in?

5. Once you have been informed that your application to rent has been approved a move in date will be confirmed and you will be required to pay the balance of monies due, i.e the remainder of the security deposit and the initial rental, and to sign the tenancy agreement.

Please refer to our **Guide for Tenants**, for full details of all the above.



Southsea  
Sales & Lettings  
7/9 Stanley Street,  
Southsea, PO5 2DS  
Tel: 023 9281 5221

Old Portsmouth & Gunwharf Quays  
Sales & Lettings  
The Seagull, 13 Broad Street,  
Old Portsmouth, PO1 2JD  
Tel: 023 9281 5221

Drayton & Out of Town  
Sales & Lettings  
139 Havant Road,  
Drayton, PO6 2AA  
Tel: 023 9221 0101

London  
Sales & Lettings  
Mayfair Office, Cashel House,  
15 Thayer Street, W1U 3JT  
Tel: 0870 112 7099

Southsea  
Admin Centre  
12 Marnion Road,  
Southsea, PO5 2BA  
Tel: 023 9282 2300

[www.fryandkent.com](http://www.fryandkent.com)



The services or appliances, plumbing, heating or electric installations have not been tested by the selling agent so we are unable to confirm that they are in working order. Whilst we endeavour to make our sales details accurate and reliable, they should not be relied upon as statements or representations of fact, and do not constitute any part of an offer contract. The seller does not make or give, nor do we or our employees have the authority to make or give, any representation or warranty in relation to the property.

